

Accessibility Guide

Welcome to Tiverton Museum of Mid Devon Life! We offer a warm welcome to everyone. If you have any questions about your visit, please contact us on 01884 256295 or email info@tivertonmuseum.org.uk

The museum is fully accessible for wheelchair users. Assistance dogs are welcomed in the museum (along with all other well-behaved dogs); we have a water bowl in the yard area.

How to find us

The museum's post code is EX16 6PJ. We are just a few minutes' walk from the bus station. As you stand with the bus station behind you, we are up a slight incline to your right. Look out for the building with a waterwheel on the outside. For details on public transport please call the Tourist Information Service on 01884 230878.

Carers and support workers enjoy free entry.

The Beck's Square short stay car park is right outside the museum (blue badge holders must pay but are given a one-hour extension to the printed expiry time, allowing a maximum stay of 3 hours. There are 4 disabled bays).

The long stay multi-storey carpark is a couple of minutes' walk from the museum. As you come out of the carpark you will see the bus station; the museum is up a slight incline to the left of the bus station. Look out for the building with a waterwheel on the outside.



Physical Access

Tiverton Museum has two floors with two sets of stairs and a lift.

Ground floor

The Main Entrance provides level access to the Museum. There are two doors in the foyer area (both 89 cm wide); the inner door is propped open. In cold weather the outer door is closed; there is a bell to the left of the door to ring for attention if you require assistance.

The reception area, shop, Tourist Information and toilets are all on the same level as the entrance.



(Front door, foyer and front desk)

There is a one way route marked by arrows on the floor throughout the museum (and signage for wheelchair users to access the lift).

The floors have carpet tiles throughout with a low pile (apart from the Agricultural Gallery and the Kitchen/Laundry Gallery which have lino floors). The galleries across the Yard have alternative floor coverings which are detailed below.

There is a small incline from the Front Desk down to the ground floor galleries which is marked on the floor.

The Education Room is located on the ground floor with a small upwards incline into the room.

First Floor

The First Floor can be accessed by a set of stairs from the Agricultural Gallery which has 14 steps and a further 2.

There are some small inclines on the First Floor: from the Wool Trade Gallery up into the Archaeology Gallery, and down out of Archaeology Gallery; down from the Kitchen/Laundry Gallery to the Upper Amory Gallery. These are marked with yellow handrails.

The Ground Floor is accessed by a wooden staircase with 18 steps. There are some retractable barriers to direct visitors around the First Floor, please feel free to move them to access the lift. There is a map to direct visitors back to the lift (at the top of the wooden stairs).

The Yard, Alford and Authors Galleries

The Yard has a tarmac finish which is a little uneven in places. The easiest route for wheelchair users to access the Yard is through the shop rather than through the Lower Amory Gallery.

The Alford Gallery has level access with a concrete floor.

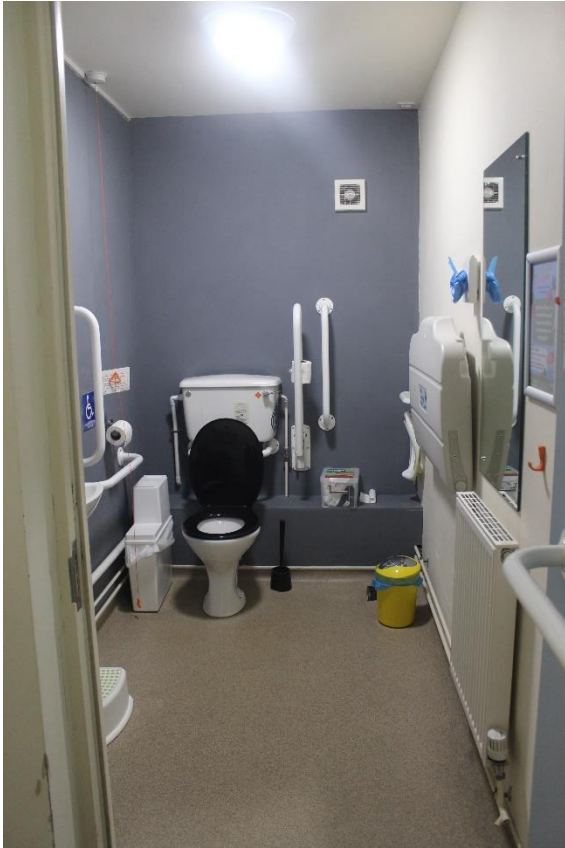
The Authors Gallery is accessed through glass double doors (for assistance please ask at the Front Desk). There is level access with a lino and wooden floor. There is a shallow ramp upwards to access the far side of the gallery, or a set of 5 steps. There is no wheelchair access into the cab of the Tivvy Bumper engine.

Sounds in the galleries

There is an air raid siren in the Lower Amory Gallery which is activated by a button. The Tivvy Bumper steam engine in Auther's Gallery also has the sound of the engine at full steam and the whistle can be pulled by visitors. Ear defenders are available to use in these areas.

Facilities

Toilets and baby changing facilities



All toilets are by the entrance on the Ground Floor, including a wheelchair-accessible toilet (pictured). The accessible toilet is stoma friendly with a small shelf and hooks on the wall. Baby change is available in all of our toilets, along with spares boxes containing nappies of various sizes, baby grows and sanitary products. There are ear defenders to borrow by the toilet as there are hand driers (paper towels are available).

The nearest Changing Places Toilet is located in Tesco's on Blundell's Way, Tiverton EX16 4DB.

Wheelchairs

The Museum is fully wheelchair accessible. A manual wheelchair is available and can be booked in advance by telephoning 01884 256295 or borrowed on the day by asking a member of staff at the front desk.

Seating

There are seats (benches and armless padded chairs) throughout the museum. These are marked on the plan of the museum given to visitors upon arrival.

Large print

Introductory text for each gallery is available in large print format (available by the Front Desk)

Induction loop

A portable induction loop is available on the Front Desk on request. Magnifying glasses are available from the Front Desk.

Hands-on

The museum has many items on open display which can be touched gently by visitors with sensory impairments. The museum offers object handling sessions in the galleries in some school holidays. Please ask staff or see the website for details.